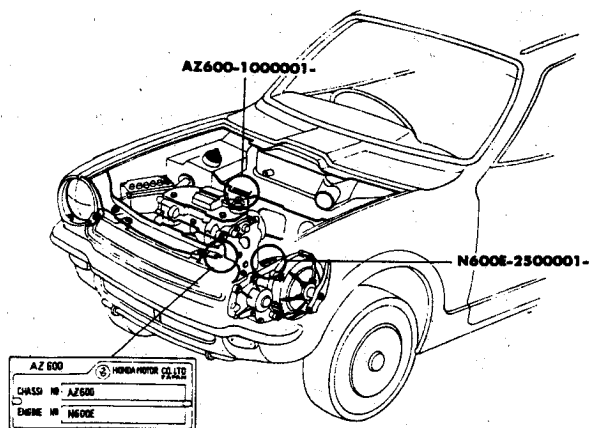


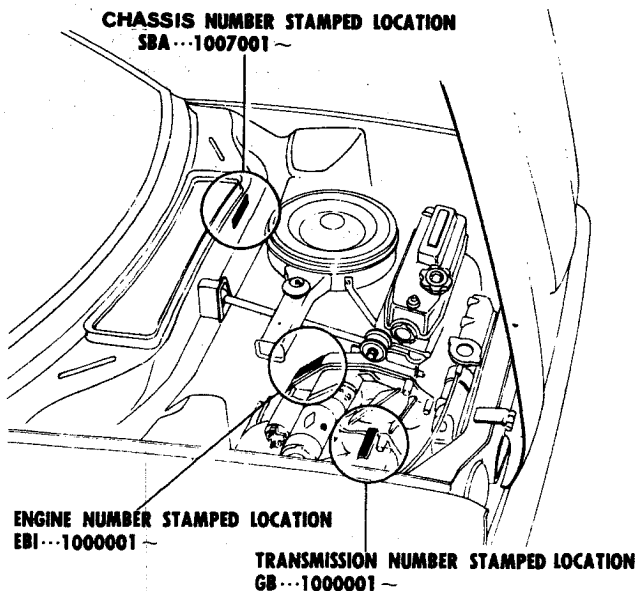
## IDENTIFICATION PLATES – 600 SEDAN



## IDENTIFICATION PLATES – 600 COUPE

## MODEL IDENTIFICATION

MODEL	YEAR	BODY TYPE	FROM CHASSIS	
CIVIC	1973	2 Door (Std)	SBA-1007001	
		2 Door (Auto)	SBB-1007001	
		3 Door (Std)	SBC-1007001	
	1974	3 Door (Auto)	SBD-1007001	
		2 Door (Std)	SBA-2100001	
		2 Door (Auto)	SBB-2100001	
	1975	3 Door (Std)	SBC-2100001	
		3 Door (Auto)	SBD-2100001	
		2 Door (Std)	SBA-3300001	
	1976	2 Door (Auto)	SBB-3300001	
		3 Door (Std)	SBC-3300001	
		3 Door (Auto)	SBD-3300001	
	1977	2 Door (Std)	SBA-4000001	
		2 Door (Auto)	SBB-4000001	
		3 Door (Std)	SBC-4000001	
	CIVIC-CVCC	1975	3 Door (Auto)	SBD-4000001
			2 Door (Std)	SBA-5000001
			3 Door (Std)	SBC-5000001
1976		3 Door (Auto)	SBD-5000001	
		2 Door (Std)	SGA-1000001	
		2 Door (Auto)	SGB-1000001	
1977		3 Dr. (Std 4-Speed)	SGC-1000001	
		3 Dr. (Std 5-Speed)	SGE-1000001	
		3 Door (Auto)	SGD-1000001	
1976		Station Wagon	WBA-1000001	
		2 Door (Std)	SGA-2000001	
		2 Door (Auto)	SGB-2000001	
1977		3 Dr. (Std 4-Speed)	SGC-2000001	
		3 Dr. (Std 5-Speed)	SGE-2000001	
		3 Door (Auto)	SGD-2000001	
1976		Sta Wgn (Std)	WBA-2000001	
		Sta Wgn (Auto)	WBB-2000001	
		2 Door (Std)	SGA-3000001	
1977	3 Dr. (Std 4-Speed)	SGC-3000001		
	3 Dr. (Std 5-Speed)	SGE-3000001		
	3 Door (Auto)	SGD-3000001		
1976	Sta Wgn (Std)	WBA-3000001		
	Sta Wgn (Auto)	WBB-3000001		
	2 Door (Std)	SJE-1000001		
1977	2 Door (Auto)	SJD-1000001		
	2 Door (Std)	SJE-2000001		
1977	2 Door (Auto)	SJD-2000001		
	2 Door (Std)	SJE-2000001		



## IDENTIFICATION PLATES – CIVIC – CVCC – ACCORD

## BUMPERS-FRAME-GRILLE-HOOD-FENDERS-ELECTRICAL

BUMPERS			HEATER			HOOD			PARKING & TURN SIGNAL LAMP FIG I									
<b>FRONT BUMPER (FIG A)</b>			34 Duct, hot air ..... 11.33			58 Assembly ..... 16.98 .3			58 Base ..... 5.54									
Assy, R&R 5, Overhaul 1.1			35 -exhaust air ..... 18.76			59 Lens ..... 3.00 .2			rim ..... 4.02									
1 Face bar ..... 42.53 .7							61 gasket ..... 1.62			62 Socket & wire ..... 1.78 .3								
2 Guard rail, R-L ..... 16.46 .2							63 Bulb ..... 1.43											
3 bracket ..... 2.53							<b>SIDE LAMP, FRONT (FIG J)</b>											
4 Mounting bracket, R-L ..... 2.99				Blower assy exc ..... 58.64 1.0			64 Assembly exc ..... 13.40 .3			-from 1043377 ..... 13.40 .3								
5 License plate bracket ..... 2.53 .2				-from 1039278 ..... 58.64 1.0			65 Base ..... 6.67			66 Lens & reflector ..... 4.42 .2								
<b>REAR BUMPER (FIG A)</b>									67 gasket ..... .84			68 Seal exc ..... 3.30						
Assy, R&R 5, Overhaul 1.0									-from 1043377 ..... 3.30			69 Socket exc ..... 1.54 .3						
6 Face bar, exc ..... 49.75 .7										70 Bulb ..... .81 .3			51					
-from 1020209 ..... 42.53 .7										<b>SIDE LAMP, REAR WITH BACK-UP LAMP (FIG K)</b>								
7 Guard, R-L exc ..... 10.36 .5										Assembly exc ..... 24.86 .3			-from 1020209 ..... 24.86 .3					
-from 1020209 ..... 10.36 .5										71 Base ..... 18.46			72 cushion ..... 2.00					
8 Mounting brkt, R-L exc ..... 4.53										73 Lens, side lamp ..... 1.72 .2			74 -back-up ..... 2.84 .2					
-from 1020209 ..... 4.53										75 gasket ..... .92			76 Reflector, each ..... 3.12 .2					
9 Gravel defl, from 1020209 (p.6) ..... 14.17 .7										77 Bulb, side lamp ..... .51			78 -back-up ..... 1.14					
<b>FRAME</b>												<b>TAIL LAMP (FIG L)</b>						
<b>FIGS B &amp; F</b>												79 Assembly ..... 16.46 .3			80 Base ..... 9.46			
10 Sub frame, front exc ..... 70.38 3.4										81 seal ..... 2.53			82 Lens exc ..... 6.49 .3			-from 1033672 ..... 6.49		
-from 1020209 ..... 70.38 3.4										83 gasket ..... 1.25			84 Socket & wiring ..... 2.95 .3			85 Bulb ..... 1.43		
11 mounting cushion (8) ..... 1.54													<b>LICENSE LAMP - SIDE TYPE (FIG M)</b>					
11A bracket, front R-L ..... 4.53													86 Base (license support) ..... 7.74 .5			87 Lamp assy, R-L wo/base ..... 13.20 .3		
<b>GRILLE &amp; FRONT PANEL</b>												88 housing ..... 7.55 .3			89 -seal ..... 2.20			
<b>FIGS C &amp; F</b>												90 socket & wiring ..... 3.65 .3			91 lens ..... 1.43 .2			
12 Grille exc ..... 21.92 .8													92 -gasket ..... .81			93 bulb ..... .51		
-from 1033852 ..... 21.92 .8																<b>LICENSE LAMP-TOP TYPE</b>		
13 emblem ..... 7.46 .3																94 Base & socket ..... 5.79		
14 screen ..... 9.04																95 gasket ..... .86		
15 -protector tube ..... .24																96 Lens ..... 2.24		
16 Mudflap, R-L ..... 4.42 .2																<b>HORN</b>		
Front panel-																Horn assy ..... 12.28 .2		
17 assembly exc ..... 49.75																# Time is for overhaul.		
-from 1033852 ..... 49.75																		
18 lower, exc ..... 18.76 # 2.0																		
-from 1033852 ..... 20.32 # 2.0																		
19 side panel, right ..... 13.20 § 1.5																		
20 -left ..... 13.20 § 1.5																		
21 tie bar, upper ..... 13.20 # 2.0																		
22 -stiffener ..... 2.11 # 2.0																		
# After bumper, grille & lamps are removed.																		
# After lower section & fender are removed.																		
<b>COOLING</b>																		
<b>FIG D</b>																		
23 Fan ..... 6.86 .9																		
24 bearing ..... 3.28																		
25 -spacer ..... .66																		
26 housing, exc ..... 31.17 .7																		
27 -from 1500001 ..... 31.17																		
28 cover exc ..... 2.31																		
-from 1500001 ..... 5.70																		
29 pulley, fan ..... 3.39 .8																		
30 -bracket ..... 1.76																		
31 -idle ..... 6.86 .5																		
32 -belt tension ..... 6.86 .5																		
33 belt ..... 4.58 .4																		
<b>BATTERY</b>																		
Battery ..... 51.56																		
52 Tray ..... 4.53																		
<b>ALTERNATOR &amp; REGULATOR</b>																		
Alternator pulley ..... 9.00 .4																		
housing, front ..... 18.76																		
-rear ..... 20.61 # 1.3																		
Regulator ..... 28.97 .5																		
<b>IGNITION</b>																		
Contact breaker assy ..... 11.00 .4																		
-lid ..... .86																		
-gasket ..... .29																		
Vacuum spark advance ..... 9.53 .5																		
Ignition coil exc ..... 16.46 .4																		
-from 1500001 ..... 16.46 .4																		
<b>HEADLAMP (FIG H)</b>																		
Aim headlamp ..... .4																		
Assembly ..... 20.91 .5																		
53 Housing ..... 6.06																		
54 Seal beam ..... 3.50 .2																		
55 retainer ring exc ..... 4.42																		
-from 1020209 ..... 4.42																		
56 mounting ring ..... 4.42																		
57 Socket & wiring ..... 3.30 .3																		



**BODY**

COWL & WINDSHIELD			REAR QUARTER			TRUNK LID		
<b>FIGS F &amp; G</b>			<b>FIGS F &amp; G</b>			<b>FIG P</b>		
137 Cowl top panel (p1.2)	28.97	# 8.0	149 Back window frame exc	28.97	# 2.5	Glass & lower chnl	26.55	# 9
138 Windshield header rail	11.33	# 1.5	149 -from 1020209	28.97	# 2.5	glass only	24.28	
139 glass	115.56	1.2	150 gutter, top	10.36		run channel, front & upper	2.99	
140 rubber chnl exc	17.16		151 -side	4.99		-rear	4.99	
140 -from 1020209	17.16		152 glass	36.42	1.1	garnish midg	6.49	
141 reveal midg, R-L upper	2.27		153 rubber channel	13.93		regulator	12.28	.7
142 -lower	2.24		154 reveal midg, R-L upper	2.02		Ventilator assy w/glass	24.28	.8
143 -joint, each	.52		155 -lower	2.02		glass	8.76	.6
Instrument panel exc	30.29	3.5	156 -joint, each	.52		-frame	16.98	
-from 1020209	30.29	3.5	<b>HEADLINING, R&amp;R 6.</b>			weatherstrip	1.74	
crash pad	23.46	1.8	#After roof & back glass are removed.			gutter	1.43	
-garnish, upper	13.20	.9	<b>REAR QUARTER</b>			Handle & button, outside	10.36	.5
door, glove box exc	4.99	.2	<b>FIGS F &amp; G</b>			Lock	11.33	.5
-from 1020209	4.99	.2	157 Outer panel exc (p2.8)	65.65	11.0	cy & keys (w/ign & trunk)	13.75	.5
-lining, inner	2.84	.3	-from 1020209 (p2.8)	65.65	11.0	striker	4.42	.2
-handle	1.34		158 Inner panel, to 1018285	61.33	# 5.0	Hinge, upper	5.54	# 3
-emblem	1.52		1020209 to 1049184	61.33	# 5.0	-lower	6.67	# 3
Wiper arm	4.53	.2	from 1049185	61.33	# 5.0	#After door is removed.		
blade	3.90	.2	159 Wheelhouse	18.76	# 1.5	<b>TRUNK LID</b>		
motor exc	46.87	.5	160 Moulding, side	6.73	.3	168 Lid, exc	36.80	# 1.0
-from 1020209	46.87	.5	Vent louvre, outer	9.04	.3	168 -from 1020209	36.80	# 1.0
washer reservoir	3.30	.2	-inner	2.24		169 Name plate, Honda exc	1.63	.3
Mirror, inside	6.82	.2	-curtain	.82		169 -from 1020209	4.16	.3
Visor	6.03	.2	161 Glass	22.77	.5	170 Lock & cylinder	9.50	.2
#After windshield & instrument panel are removed.			162 frame	30.14		171 cylinder & keys	5.54	.3
#After roof & windshield are removed.			163 rubber channel	8.12		172 striker	1.54	.2
<b>ROOF &amp; BACK WINDOW</b>			164 seal	9.13		173 -bracket	1.87	
<b>FIGS F &amp; G</b>			165 lock	5.54	.3	174 Support	1.25	.4
144 Roof panel, exc (p3.2)	61.33	15.0	<b>ROCKER PANEL</b>			175 -spring	1.32	
-from 1016385 (p3.2)	61.33	15.0	<b>FIG F</b>			176 Hinge strap, exc	2.84	# 2
extn, front, see cowl top			166 Outer panel (p1.0)	17.95	3.5	176 -from 1020209	2.84	# 2
145 -rear exc	25.03		Sill protector exc	4.99	.2	177 Weatherstrip	11.44	.4
-from 1016385	25.03		-from 1049185	4.99	.2	#Sold as painted part - order by color.		
146 Rain gutter cover, front	6.73	.3	-plate	6.67	.2	<b>REAR BODY</b>		
147 -rear	6.73	.3	<b>DOOR</b>			<b>FIG F</b>		
148 -joint	.81		Assembly, Remove & Reinstall			178 Panel, lower (p1.5)	19.82	# 2.5
			Trim panel, Remove & Reinstall			After bumper is removed.		
			Door (p2.5)			<b>SEAT TRACKS</b>		
			Window frame			To 1017950, R-L inner	8.87	# 6
			Weatherstrip around door			-outer	6.67	
			167 Moulding, side			From 1017951, R-L inner	8.87	# 6
			Mirror			-outer	6.67	
						#Time is for overhaul.		

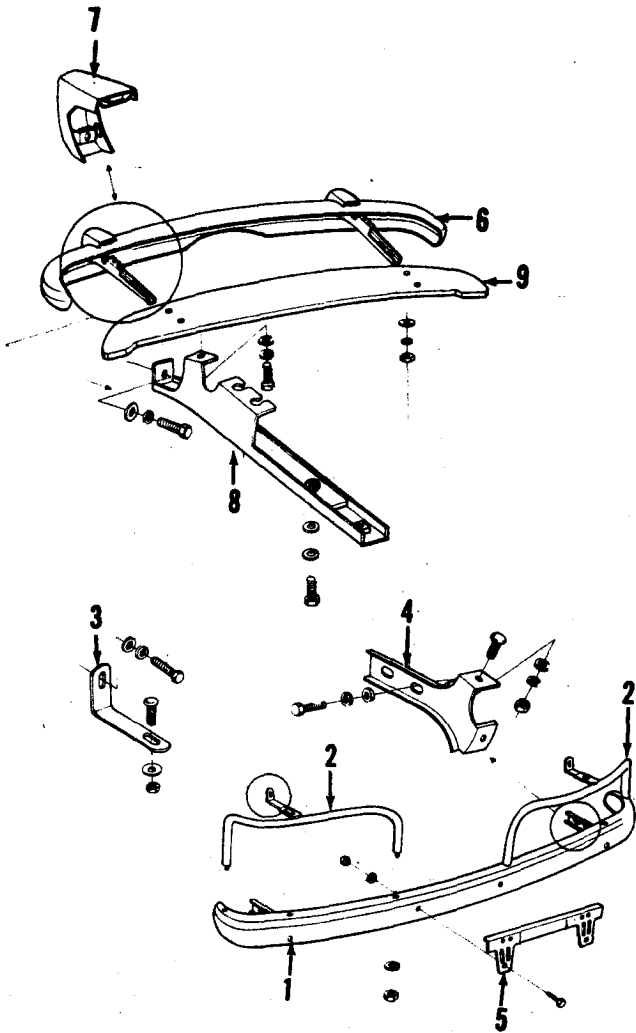


FIG A - BUMPERS

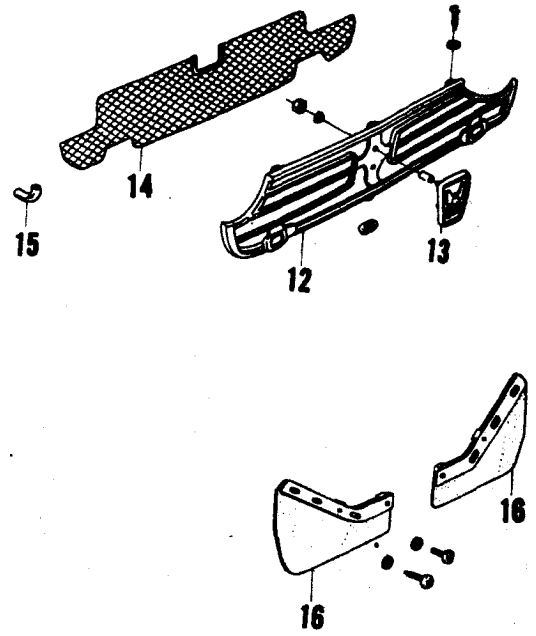


FIG C - GRILLE & MUD FLAPS

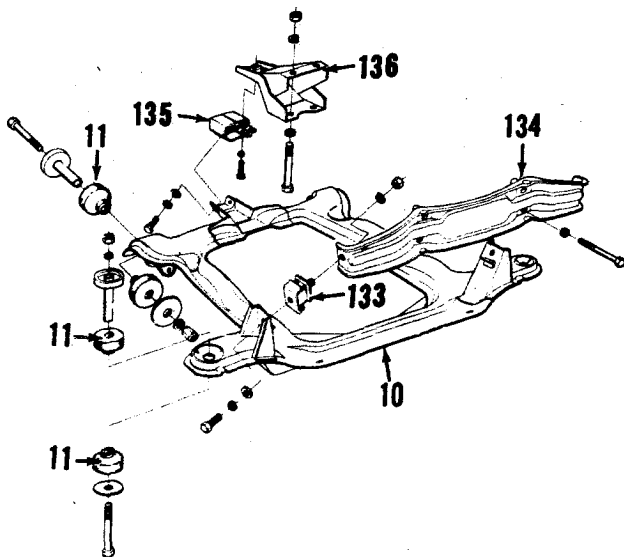


FIG B - FRAME & ENGINE MOUNTS

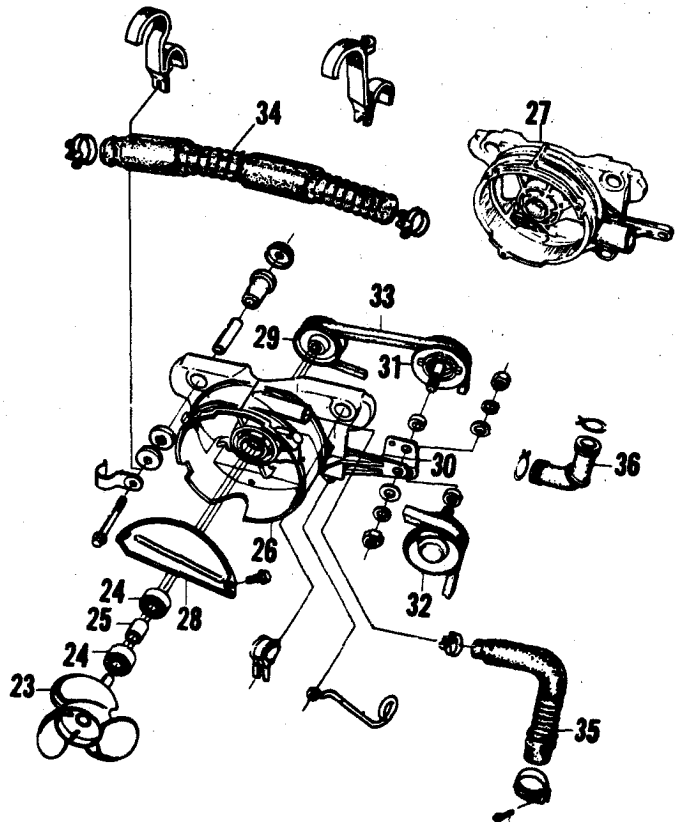


FIG D - COOLING

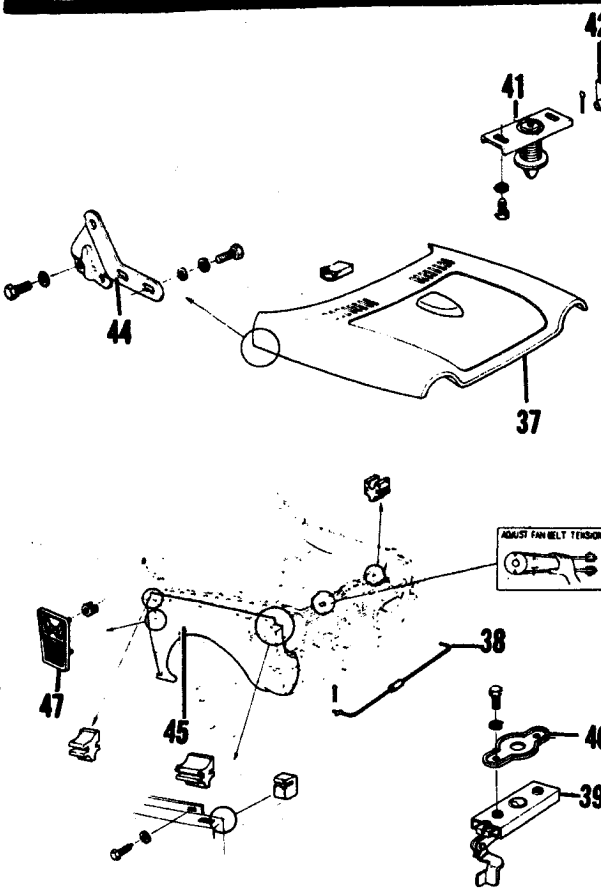


FIG E - HOOD & FENDER

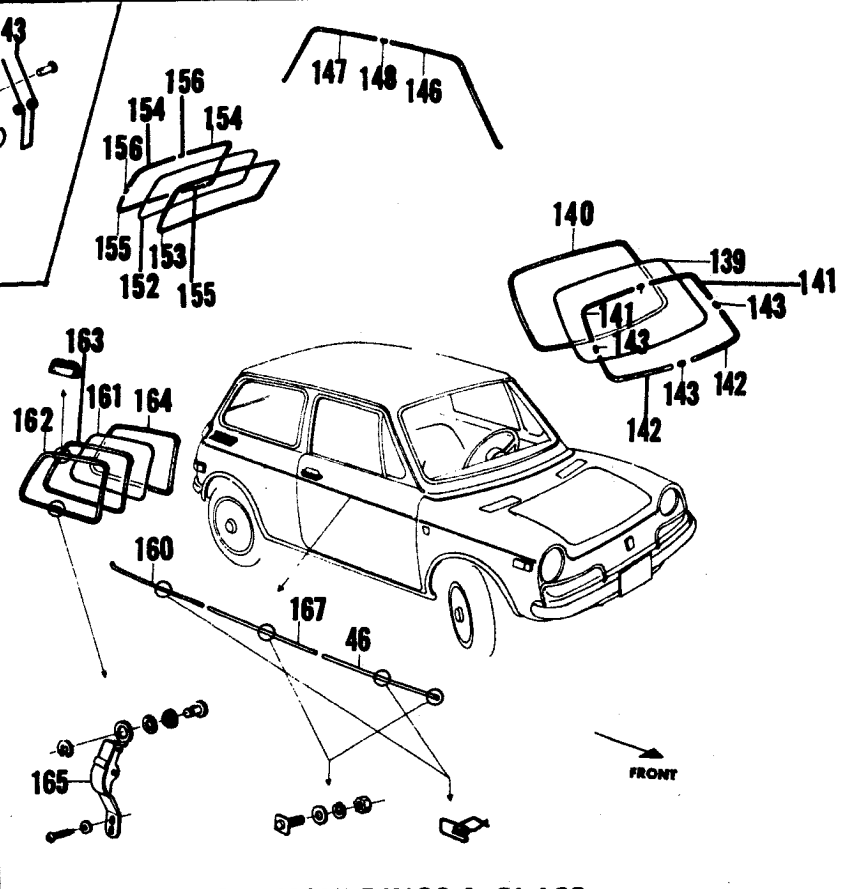


FIG G - MOULDINGS & GLASS

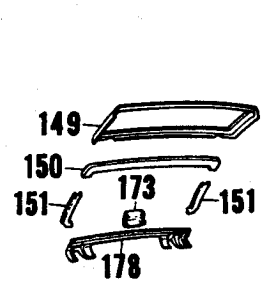
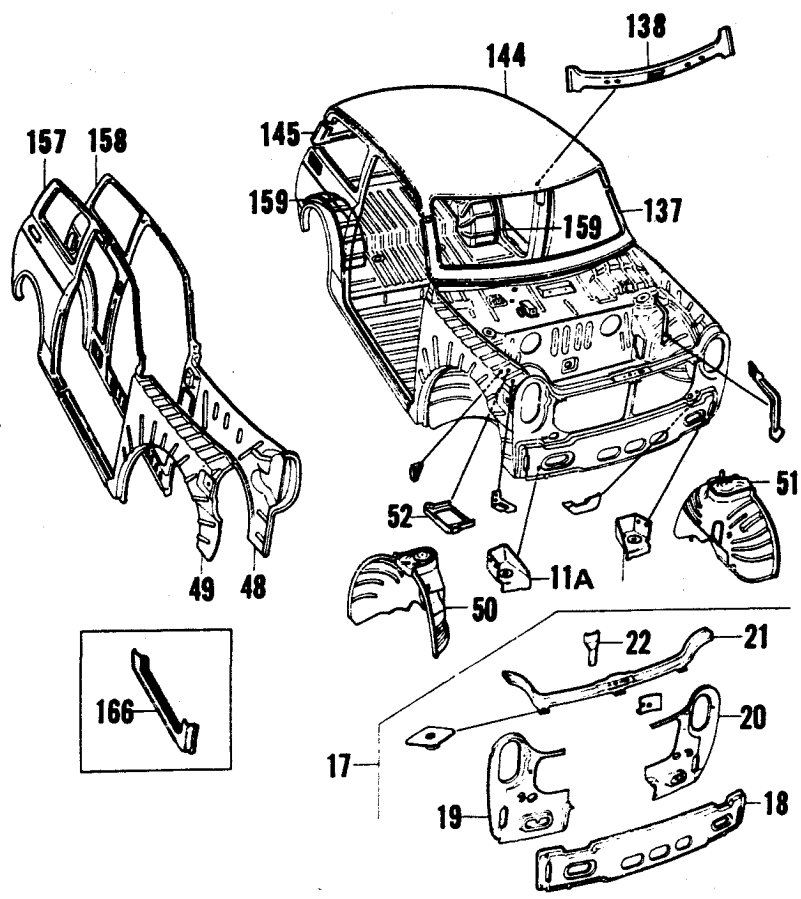
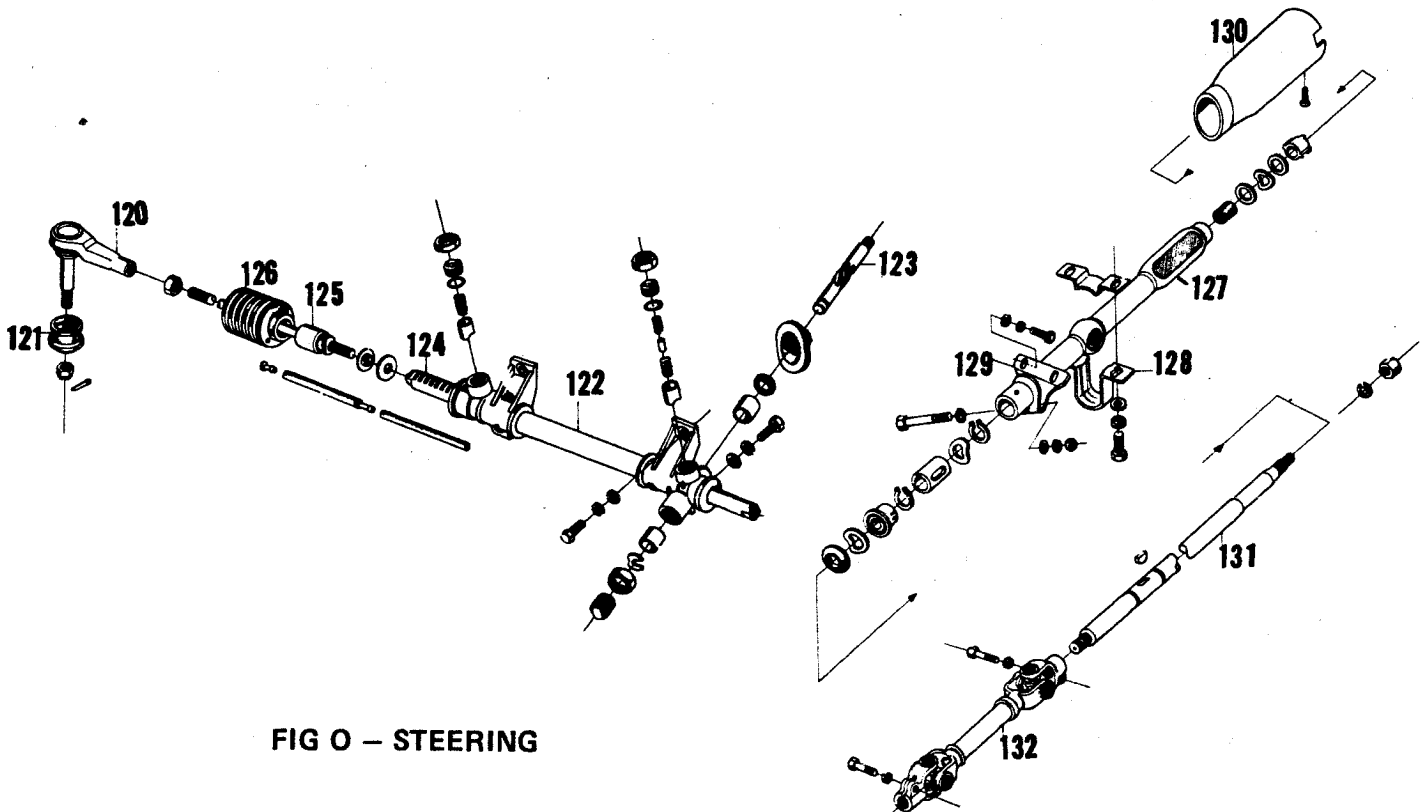
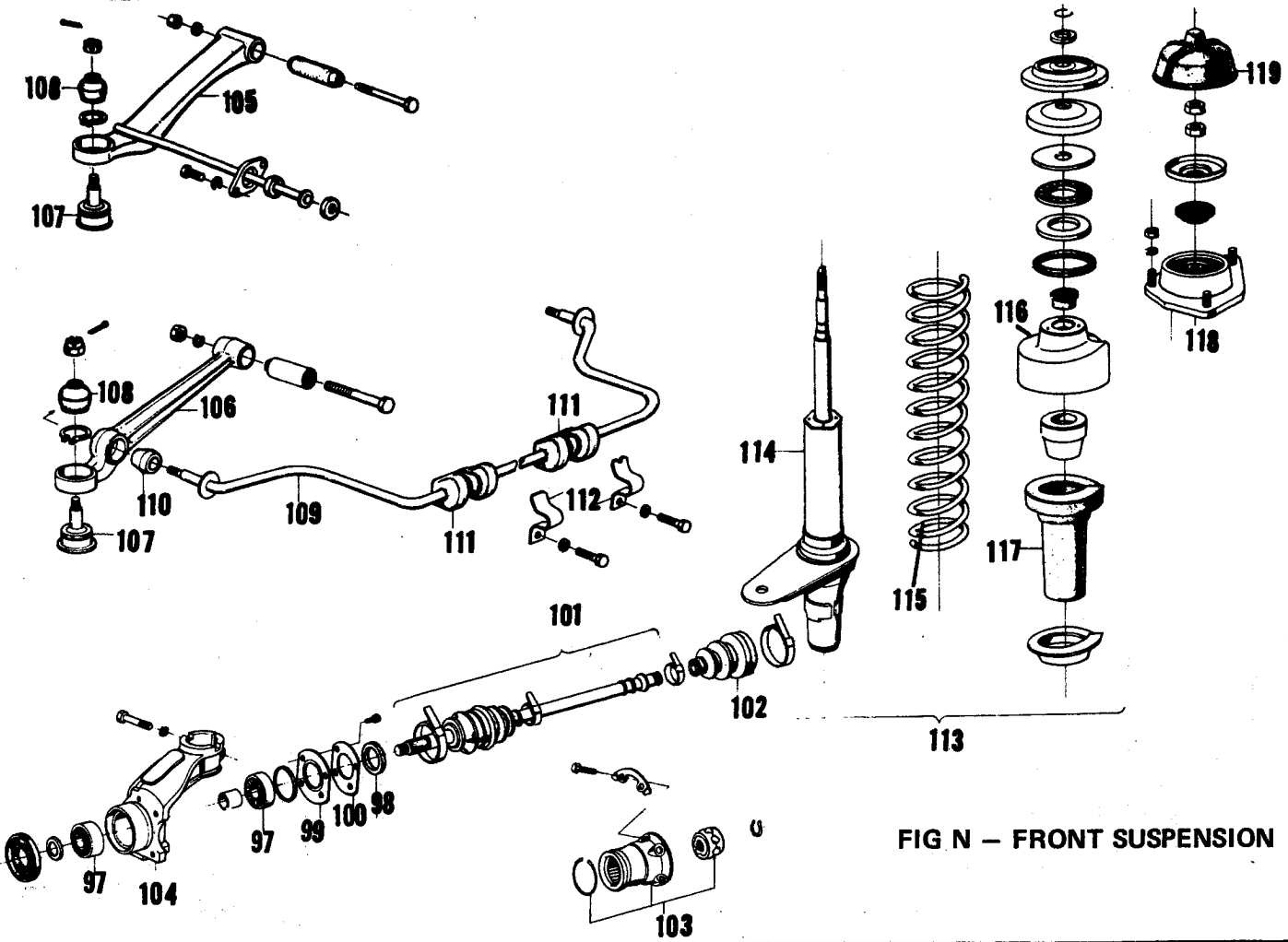


FIG F - SHEET METAL







BUMPERS-FRAME-GRILLE-COOLING-HOOD-FENDERS-ELECTRICAL

BUMPERS			HEATER			PARKING & TURN SIGNAL LAMP		
<b>FRONT BUMPER (FIG A)</b>			10 Blower assy exc	63.64		<b>FIG J</b>		
Assy, R&R .5, Overhaul 1.1			10 -from 1000023	63.64		71 Assembly	16.98	.3
1 Face bar & guard rail	65.65	.5	<b>HOOD</b>			72 Base	5.54	
2 face bar only	54.10	.7	<b>FIG E</b>			73 Lens	3.00	.2
3 guard rail only	18.76	.3	42 Hood panel (p2.2)	65.65	.8	74 rim	4.02	
4 Mounting bracket, R-L	4.53		15 Moulding, see grille			75 gasket	1.62	
5 License plate bracket	2.53	.2	43 Emblem	4.47	.2	26 Socket & wire	1.78	.3
<b>REAR BUMPER (FIG A)</b>			44 Support rod, to 1003346	4.53	.2	77 Bulb	1.43	
Assy, Overhaul 1.0			45 -1003347 to 1005966	2.00	.2	<b>SIDE LAMP, FRONT (FIG K)</b>		
6 Face bar, cntr exc	21.12	.4	46 -from 1005967	1.54	.2	78 Assembly exc	14.08	.3
6 -from 1005967	23.46	.4	47 bracket, from 1003347	.92		-from 1005967	14.08	.3
7 -side exc	27.37	.5	48 Lock exc	2.99	.3	79 Base exc	6.67	
7 -from 1005967	28.97	.5	48 -from 1005967	2.99	.3	-from 1005967	6.67	
8 -joint, R-L	.68		49 striker guide plate	1.03	.3	80 Lens & reflector	4.42	.2
9 -cushion, cntr	1.54		50 pivot bolt assy	4.53		81 gasket	.84	
10 Guard & cushion, R-L	16.98	.3	51 release cable assy	2.99	.4	82 Seal exc	3.30	
11 cushion only	2.24		52 -grip only	1.72		-from 1005571	3.30	
<b>FRAME</b>			53 Safety catch	1.72	.2	83 Socket	1.72	.3
<b>FIG B</b>			54 spring	.62		84 Bulb	.51	
12 Sub frame, front	76.97	3.4	55 Hinge, exc	4.53	#.2	85 Mounting plate	.81	
13 mounting cushion (8)	1.54		55 -from 1005967	4.07	#.2	<b>SIDE LAMP, REAR (FIG L)</b>		
<b>GRILLE &amp; FRONT PANELS</b>			56 bracket	2.24		86 Assembly exc	14.08	.3
<b>FIGS C-F-G</b>			57 shim	.57		-from 1005571	14.08	.3
14 Grille	27.37	.8	# After hood is removed.			87 Base exc	6.67	
<b>FIGS C-F-G</b>			<b>FRONT FENDER</b>			-from 1005967	6.67	
16 -lower	10.47	.3	<b>FIGS F &amp; G</b>			88 cushion exc	3.30	
17 screen, R-L	4.07		58 Fender (p1.8)	38.21	1.5	-from 1005967	3.30	
18 Mudguard, R-L	4.42	.2	59 Inner panel exc	38.21	# 3.0	89 Lens exc	4.42	.2
19 Splashguard, R-L	2.24		-from 1005968	38.21	# 3.0	-from 1002080	4.42	.2
Grille panels-			60 -stiffener	9.04		90 gasket	.64	
20 lower, skirt (p.8)	12.28	.5	61 Wheelhouse	33.89	\$ 1.5	91 Bulb	.51	
21 upper assy (p1.2)	28.97	#.8	61A cap, upper	8.87		91A Socket & wiring	1.72	.3
22 -cntr only	28.97		62 mounting bracket exc	5.54		<b>TAIL &amp; BACK-UP LAMP</b>		
23 -side only	7.08	#.8	-from 1005968	5.54		<b>FIG M</b>		
Bulkhead panels-			63 -reinforcement	5.54		92 Assembly exc	32.87	.3
24 assembly	38.21		# After fender & door are removed.			-from 1005967	32.87	.3
25 section only, upper	13.20	\$ 2.0	‡ After inner panel is removed & knee is loosened.			93 Housing	14.17	
26 -lower	16.98	\$ 2.0	<b>ELECTRICAL</b>			94 seal	2.84	
27 -side	13.20	† 1.5	<b>BATTERY</b>			95 Lens, tail exc	5.54	.3
28 brkt for park lamp	2.84		Battery	35.90		-from 1005967	5.54	.3
29 -for bmpr guard	8.87		64 Tray	6.49		96 -back-up	2.24	.3
# After bumper, grille & lower skirt are removed.			<b>ALTERNATOR &amp; REGULATOR</b>			97 Door	10.36	.2
‡ After bumper, grille & lamps are removed.			Alternator pulley	9.00	.4	98 gasket	2.11	
† After lower section & fender are removed.			housing, front	18.76		99 Reflector, tail	4.53	
<b>COOLING</b>			-rear	20.61	# 1.3	100 -back-up	2.84	
<b>FIG D</b>			Regulator	28.97	.5	101 Socket & wiring	6.12	.2
30 Fan	6.86	.9	<b>IGNITION</b>			102 Bulb, tail	1.43	
31 bearing	3.28		Contact breaker assy	11.00	.4	103 -back-up	1.14	
32 -spacer	.66		-lid	.86		<b>LICENSE LAMP (FIG N)</b>		
33 housing	31.17	.7	-gasket	.29		104 Base, license support	12.03	.5
34 -cover	5.70		Vacuum spark advance	9.53	.5	105 Lamp assy, R-L wo/base	13.20	.3
35 pulley, fan	3.39	.8	Ignition coil	16.46	.4	106 housing	7.55	.3
36 -bracket	1.76		<b>HEADLAMP (FIG I)</b>			107 -seal	2.20	
37 -idle	6.86	.5	Aim headlamp			108 socket & wiring	3.65	.3
38 -belt tension	6.86	.5	65 Assembly	21.89	.5	109 lens	1.43	.2
39 belt	4.58	.4	66 Housing	11.33		110 -gasket	.81	
40 Duct, hot air	11.33		67 Seal beam	3.50	.2	111 Bulb	.51	
41 -exhaust air	17.26		68 retaining ring	4.42		<b>HORN</b>		
			69 mounting ring	4.42		Horn assy	16.98	.2
			70 Socket & wiring	3.30	.3	# Time is for overhaul.		

## WHEELS-SUSPENSION-STEERING

WHEELS & FRONT SUSPENSION			REAR SUSPENSION		
Toe-in, adjust .5					
<b>WHEELS (FIG O)</b>					
Wheel (p.5) Kanai	21.12	# .3	136 Gear assy wo/tie rods	69.25	\$ 1.9
-Yuno	21.12	# .3	137 pinion	13.20	
Hub cap	4.99		138 rack	21.12	
Bearing, front wheel-			139 -end	12.28	#
112 bearing, outer or inner	5.76	1.2	140 boot	4.07	
113 seal	1.54		141 Column	8.87	
114 cover, bearing	2.00		142 cover, upper	5.54	
115 -dust seal	2.11		143 -lower	5.54	
Bearing, rear wheel-			144 Mainshaft	11.33	1.3
bearing, outer	3.81	.4	145 joint assy	31.31	.7
-inner	4.55	.4	Wheel	38.21	.3
seal	1.54		safety pad	8.03	.2
cap	1.54		-emblem	3.50	
<b>FRONT SUSPENSION (FIG O)</b>			# Right 1.0, left 1.8. § Time is for overhaul.		
Hub	20.32	\$ 1.3	<b>STEERING</b>		
Brake disc	23.46		<b>FIG P</b>		
-shield	5.54	1.2	134 Tie rod end, R-L	10.36	.6
caliper assy w/pads	76.97	1.0	135 boot	2.53	
hose	7.04	.4			
116 Drive shaft sub assy	94.71	1.5			
117 bellows	6.03				
118 joint, inboard	61.33				

## ENGINE-CLUTCH-TRANSMISSION-FUEL-EXHAUST

ENGINE	FUEL	EXHAUST
<b>ENGINE RENEW</b>		
All models		
<b>ENGINE PARTS (FIG B)</b>		
Shroud, right	5.37	.3
-left	5.37	.5
146 Mounting cushion, front R-L	7.08	.8
147 bracket	20.32	.6
148 Mounting cushion, rear	7.55	1.0
149 bracket	6.03	
<b>CLUTCH &amp; TRANSMISSION</b>		
<b>CLUTCH (OR DISC) R&amp;R OR RENEW</b>		
All models		
<b>TRANSMISSION PARTS, RENEW</b>		
Primary socket or chain		2.0
Main shaft		5.0
Countershaft		5.0
Gasoline tank exc	42.53	1.0
-from 1005967	42.53	1.0
filler tube	5.85	.4
-pipe, front	13.97	.6
-rear	7.04	.3
-cap	3.30	
Fuel pump	33.99	.8
-cover	5.59	.4
-inspection lid	2.86	.2
-gasket	1.72	
-strainer	3.50	.3
Air cleaner element	6.44	.2
case	18.76	.4
-cover	4.25	
Heat exchanger	92.77	1.5
Manifold	16.46	.6
Heater joint pipe	34.64	1.0
Exhaust pipe, front	25.83	.5
-rear	38.21	.5
Muffler	38.21	.4
Tail pipe exc	22.62	.3
-from 1004792	22.62	.3

BODY

COWL & WINDSHIELD		REAR QUARTER		TAIL GATE	
<b>FIGS E-F-G-H</b>		<b>FIGS F-G-H</b>		Gate & glass assy (p1.2) ..... 80.91 .5	
Cowl top panel-		172 Outer panel only (p3.2) ..... 63.16 #		Lock ..... 6.67 .2	
150 outer (vent grille) (p1.2) ..... 20.32		-w/roof side panel (p3.7) .. 115.79		striker ..... 1.54	
151 inner ..... 15.11		173 Inner panel exc ..... 63.16 \$ 3.5		cylinder & keys ..... 6.67 .2	
152 Windshield header rail ..... 11.33 # 1.5		-from 1005967 ..... 63.16		Hinges & attaching bar ..... 15.49 # .4	
153 pillar, inner ..... 13.20		174 Lock pillar ..... 18.76 \$ 1.5		Torsion bar, each ..... 2.84	
154 glass ..... 126.90 1.2		175 Gutter, rear at gate ..... 4.53		link ..... 1.72	
155 rubber channel ..... 16.62		176 Wheelhouse ..... 18.76 \$ 1.5		Weatherstrip on body ..... 12.28 .4	
156 reveal midg, R-L upper ..... 2.27		177 Gas filler lid ..... 2.99 .2		#After gate is removed.	
157 -lower ..... 2.27		-striker ..... .50			
158 -joint, each ..... .52		-cylinder ..... 6.67			
Instrument panel ..... 11.33		178 -adaptor ..... 16.98			
door, glove box ..... 8.87 .3		-hose cover ..... 11.33 .3			
lock ..... 3.96		179 Moulding, belt ..... 5.59 .3			
emblem ..... 2.38		180 -front pillar ..... 4.47 .3			
Wiper arm ..... 4.53 .2		181 Emblem ..... 9.33 .3			
blade ..... 3.98 .2		182 Glass ..... 15.96 .4			
motor ..... 50.49 .5		183 rubber channel ..... 11.44			
washer reservoir ..... 3.30 .2		184 lock ..... 6.67 .2			
Mirror, inside ..... 8.51 .2		185 hinge ..... .92 .2			
Visor ..... 6.03 .2		#Right 12.0, left 13.0.			
#After roof & windshield are removed.		‡After outer panel is removed.			
ROOF		ROCKER PANEL		SPARE TIRE LID	
<b>FIGS F-G-H</b>		<b>FIGS F &amp; G</b>		Lid (p1.5) ..... 18.76 .8	
159 Roof panel, top (p2.8) ..... 61.33 12.0		186 Outer panel (p1.0) ..... 31.03 # 2.5		seal ..... 5.54	
160 -side (also sold w/qtr) ..... 28.97 # 4.0		187 Inner panel exc ..... 11.33		lock exc ..... 3.30	
161 Rail, rear above gate ..... 15.11 \$ 1.5		-from 1005967 ..... 11.33		-from 1005967 ..... 3.30	
162 -side inner ..... 4.99		Sill projector exc ..... 5.54 .2		stopper exc ..... 2.00	
163 Rain gutter ..... 9.04 2.0		#Cut within door opening.		-from 1005967 ..... 2.00	
164 chrome cover, front ..... 6.73 .2				safety catch exc ..... 3.30	
165 -rear ..... 5.04 .2				-from 1005967 ..... 3.30	
166 -joint ..... .64				Spare tire lock ..... 6.67	
167 Weatherstrip above door ..... 5.59				-band ..... 3.30	
Moulding, roof top-				-release wire ..... 3.30	
168 -front or rear ..... 4.11 .2				-lock, R-L ..... 3.45	
169 -end, front ..... 2.13				Trunk board beam, R-L ..... 2.84	
170 -rear ..... 2.13					
171 -joint ..... .46					
Console assy, inside ..... 55.52					
<b>HEADLINING, R&amp;R .6.</b>					
#After roof panel is removed.					
‡After roof & lift gate are removed.					
DOOR		REAR BODY			
<b>FIGS F &amp; H</b>		<b>FIGS F &amp; G</b>		Rear body panel-	
Assembly, Remove & Reinstall .. 5		194 outer complete exc (p2.0) ..... 38.21 # 6.0		-from 1005967 ..... 38.21 # 6.0	
Trim panel, Remove & Reinstall .. 3		195 -upper only exc ..... 28.97 # 6.0		-from 1005967 ..... 28.97 # 6.0	
188 Door (p2.5) ..... 98.68 3.0		196 -lower only exc ..... 19.82 \$ 2.0		-from 1005967 ..... 19.82 \$ 2.0	
189 Window frame ..... 19.82 1.5		197 inner (bulkhead) exc ..... 18.76		-from 1005967 ..... 18.76	
Weatherstrip around door ..... 13.33 .5		198 reinforcement ..... 13.20		Name plate ..... 4.16	
190 Moulding, wndo frame, front ..... 7.81 .2		199 Floor pan, rear ..... 50.49		200 gas tank access cover exc ..... 13.20	
191 -rear ..... 2.86 .2		201 crossmember, rear ..... 17.95		202 bumper bracket ..... 2.24	
192 Mirror, order by color ..... 21.20 .2		#After bumper & lamps & spare tire lid are removed.		#After bumper is removed.	
193 Glass & lower channel ..... 31.89 .7					
glass only ..... 28.85					
run channel ..... 7.08					
regulator ..... 12.28 .7					
Handle & button, outside ..... 7.74 .5					
Lock ..... 16.98 .5					
cylinder & keys ..... 6.67 .5					
striker ..... 2.88					
Hinge, upper ..... 5.54 # .3					
-lower ..... 6.67 # .3					
#After door is removed.					
				<b>SEAT TRACKS</b>	
				Track, driver seat, R-L ..... 11.33 # .6	
				-pass seat, R-L ..... 13.20 # .6	
				#Time is for overhaul.	